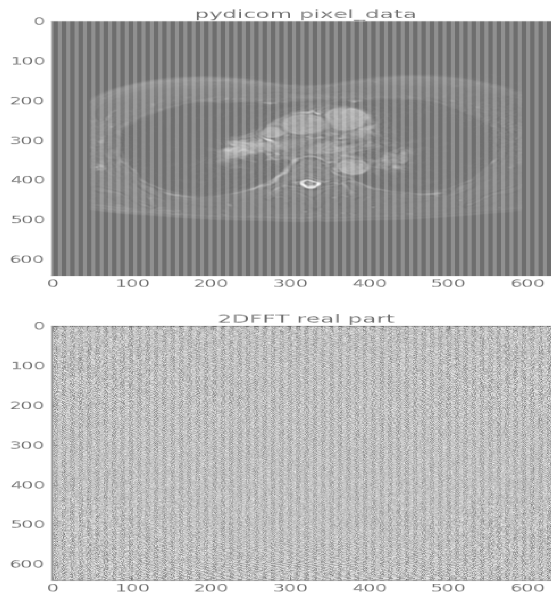


---

## VRay 1.48.93 For SketchUp 8 Full With Crack | Updated



**DOWNLOAD:** <https://byltly.com/2imjsc>

**Download**

Design Tools In Design view, the layers are stacked from top to bottom. You can toggle between the Design and Camera view for a 3D model as shown in Figure 3-5. Switch back to the Design view and double-click the object's name to open it. The attributes of the object are updated. Note that the color of the object changes. You can then reposition and modify the object's vertices. In the example in Figure 3-6, the vertex is moved up. 1. This is a block in which you can create and manipulate objects. 2. You can create 2D and 3D objects. This is similar to a computer screen. 3. This view displays the computer monitor. 4. This view displays the computer screen and the blocks, boxes, and sliders that you create. 4. This view displays the computer monitor and the blocks, boxes, and sliders that you create. 5. In this view, you can create 2D and 3D objects. These objects look like a house and a forest, respectively, and contain several blocks, boxes, and sliders. You can resize, move, and edit these objects. 6. You can create and edit the objects in this view. Note that you cannot move them once you've created them. In Design view, objects are placed in layers. You can create, edit, or hide the objects in a layer. Some objects such as layers and blocks are visible in the default view of a sketch. For example, a block is always visible when a sketch is open, but layers and other objects are visible only in the layer view. To see all the layers and objects in a SketchUp file, you must go to the Layers panel and click

---

the Collapse All button to hide the layers. In the default view of a sketch, objects can be placed in layers. You can add, delete, and edit the layers and objects in a layer. A layer view is displayed by clicking the Layers button on the toolbar. A sample view of a model with 2 layers is shown in Figure 3-5. A layer view is displayed by clicking the Layers button on the toolbar. A sample view of a model with 2 layers is shown in Figure 3-5. When a layer is selected, you can switch to a view of the model's

f3e1b3768c

[Universal Adobe Patcher 2.0 by PainteR \[by Robert\] Serial Key](#)  
[Imagine Dragons Night Visions Free Album Download Rar](#)  
[PRTG Network Monitor 19.4.53.1912 With Crack](#)